



Channel Flushing Gate Type CF

Wastewater sewer and channels with little slope can cause sediments during dry weather operation. Storm water catchment channels create sediments during storm events due to the sediment deposited on the channels or sewer floor. This creates potential for blockages and malodours will occur due to septicity.

The BIOGEST® Channel Flushing Gate Type CF is the ideal solution for flushing and cleaning large canals, sewers storage and sewage systems.

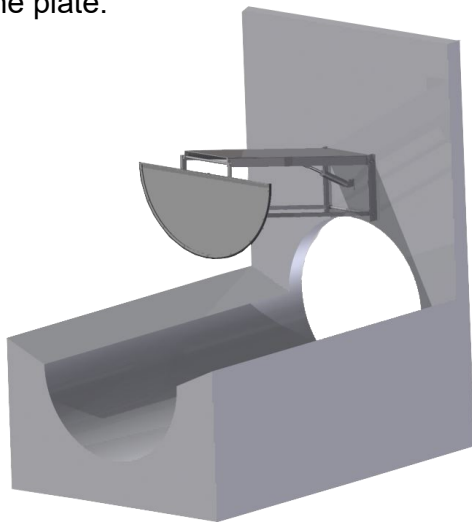
- Effective flushing and cleaning of storage canals and sewage pipes -

Functionality

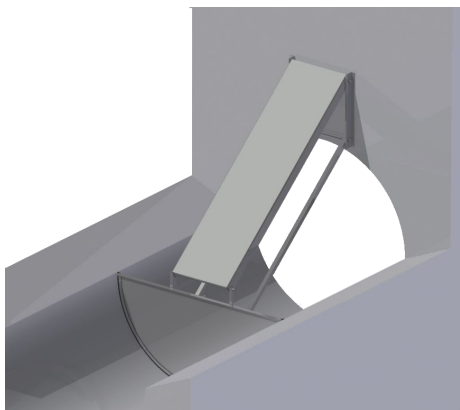
In dry weather situation and during a rain event the channel flushing gate is in high position. Operation of the system can be done following local requirement.

Once a flushing is required the Channel Flushing Gate will be operated with a hydraulic powered double acting cylinder that moves the plate. As soon as the gate is in low position the water pressure from the dry weather water pushes the seal on the channel body and seals the cap between the plate and the channel. Once in low position the hydraulic power pack shuts off. The upstream channel will be filled with the upstream coming water and the level rises behind the plate in the channel.

Once the required water level is reached, the Channel Flushing Gate is ready to be opened and the flushing sequence starts automatically. The water behind the plate will be released and flushes the downstream channel with a high-water pressure and volume that was stored behind the plate.

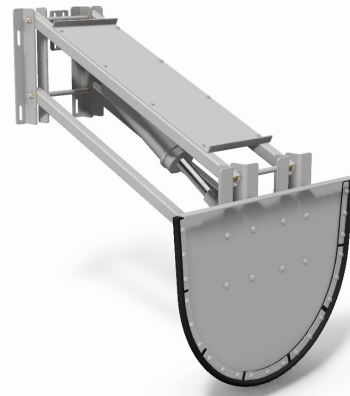


Channel flushing gate in upper position



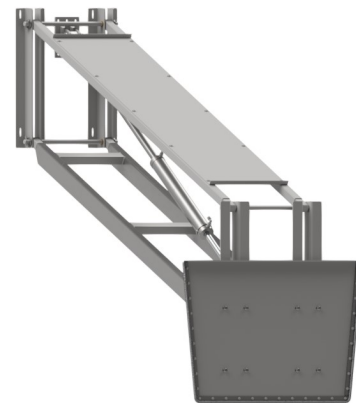
Channel flushing gate during damming

Design parameters



Channel flushing gate for circular profile

The standard dimensions are from DN 600 to DN 2000.



Channel flushing gate for rectangular profile

The standard dimensions are up to 4 m width.

The advantages

- ◆ Flushing of channels and sewers on long section
- ◆ No hindrance and reduction in the pipe diameter
- ◆ Long-lasting powerful flushing
- ◆ Solid stainless-steel construction
- ◆ Cleaning with existing channel water
- ◆ Operation in intervals and with dry weather flows
- ◆ Low energy consumption
- ◆ Different dimensions available